



**DUFOUR 430 GRAND LARGE**

POA



**Specifications**

**Boat Details**

Price	POA	Boat Brand	DUFOUR YACHTS
Model	430 Grand Large	Length	13.24
Year	2018	Category	Cruising Yachts
Hull Style	Single	Hull Type	GRP
Power Type	Sail	Condition	New
Suburb	Auckland	Engine Make	Volvo

**Disclaimer**

Our company offers the details of this vessel in good faith but cannot guarantee or warrant the accuracy of this information nor warrant the condition of the vessel. A buyer should instruct his agents and/or surveyors to investigate such details buyer desires validated. This vessel is offered subject to prior sale, price change or withdrawal without notice.

## Description

The hull of the new Dufour 430 Grand Large incorporates a higher, longer and smoother bilge strake, aft. The bow, on the other hand, becomes slightly rounded.

This design leads to improved stability, and avoids the diving effect of some beamy hulls, but also offers a larger interior volume, especially forward.

The new design of the deck plan is a subtle balance between timeless elegance, space optimization of each area and ingenious integration of new features, such as the telescopic tender davits hidden at aft.

The new deck plan of the Dufour 430 is the result of thorough research and design to create a timeless design, optimize each area and integrate new features.

The coachroof has slightly increased volume for more comfort, but the side-decks remain wide - a feature common to all Dufour Yachts.

The Dufour 430 is setting new standards in the Grand Large 3.0 range.

Among the most remarkable new features: the elegant steering consoles with integrated instruments, the wide helmsman's seat, the exterior galley, the magnificent bathing ladder on the fixed aft platform, a double swing door and finally the LED lighting that illuminates the entire deck.

The Dufour 430 Grand Large benefits from the Dufour Yachts expertise, a sailboat builder for over 50 years.

On board, all materials are selected with the greatest care and are built to last.

Three types of wood are available for the cabinetry - moabi, oak or teak. You will love the modular accommodation, the generous natural lighting, the new headlinings and the parquet-style flooring.

---

## Dimensions

Designer	Umberto Felci
Builder	DuFour Yachts
Water (Potable) Capacity (l)	430
Hull Construction Material	GRP
Hull Type	Monohull
Deck Construction Material	Injection moulded
Country Origin	France
Length (m)	13.24
Length Waterline (m)	11.69
Beam/Width (m)	4.30
Draft (m)	2.10
Keel/Ballast	2600kg
Number of Helms	2
Displacement	9700kg

---

### Disclaimer

Our company offers the details of this vessel in good faith but cannot guarantee or warrant the accuracy of this information nor warrant the condition of the vessel. A buyer should instruct his agents and/or surveyors to investigate such details buyer desires validated. This vessel is offered subject to prior sale, price change or withdrawal without notice.

## Engine

Engine Notes	Volvo 50HP
Number Of Engines	1
Engine Standard	EC-Type Approval Certificate
Stroke	4 x stroke
Engine Hours	New
Horse Power (hp)	50HP
Drive Type	Sail Drive
Generator	NA
Number of Batteries	3
Fuel Type	Diesel
Number of Fuel Tanks	1
Fuel Tank Capacity (L)	250
Propeller	Twin Blade - Fixed
Steering System	Wheel, cable and quadrant
Bow Thruster	Optional

## Interior

Accommodation Notes	Optional
Number of Berths	6+ OPTIONAL
Number of Showers	3
Shower Type	2 x Internal, 1 x Cockpit
Number of Toilets	2
Toilet Type	Manual or optional 12-Volt
Air Conditioning	No
Number of TVs	Optional
Holding Tank	Yes

## Galley

Stove	2 x Burner Hob/Oven-Grill
Refrigeration	Fridge 12- Volt
Number of Freezers	Optional
Number of Sinks	2 x

---

### Disclaimer

Our company offers the details of this vessel in good faith but cannot guarantee or warrant the accuracy of this information nor warrant the condition of the vessel. A buyer should instruct his agents and/or surveyors to investigate such details buyer desires validated. This vessel is offered subject to prior sale, price change or withdrawal without notice.

## Equipment & Safety

Anchor / Winch	Yes
Bilge Pump	12-Volt and Manual
Deck Gear	Subject to option chosen
Mast/Rigging	Aluminium with Stainless Steel rigging
Sail Inventory	Main and Genoa
Electrics	Optional
Electronics Navigation	Optional
Dinghy	Optional
Safety Gear	Owners personal choice
Ground Tackle	Rope, Chain and Anchor
Ice Maker	No
Watermaker / De-Sal	Optional
GPS	Optional
Number of Fish Finders	Optional
Has Navigation Lights	Yes
Radio	AM/FM Radio
Number of Life Jackets	Owners personal choice

## General Specification

Vessel Name	DuFour 430 Grand Large
-------------	------------------------

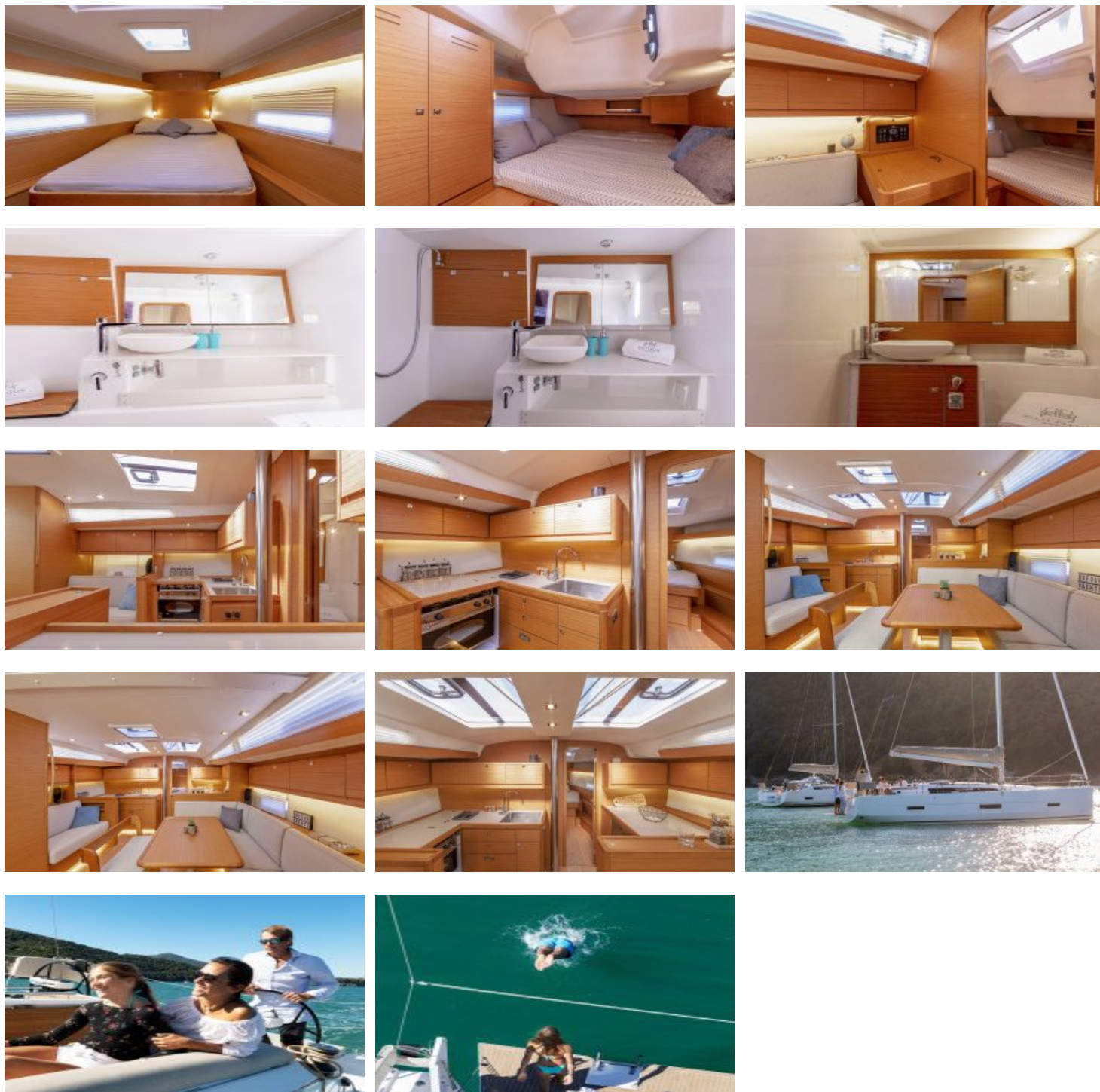
## Engine Details

Engine Make	Volvo
Horse Power	50
Fuel Type	DIESEL
Drive Type	10
Fuel Capacity	250
Propeller	Wheel, cable and quadrant



## Disclaimer

Our company offers the details of this vessel in good faith but cannot guarantee or warrant the accuracy of this information nor warrant the condition of the vessel. A buyer should instruct his agents and/or surveyors to investigate such details buyer desires validated. This vessel is offered subject to prior sale, price change or withdrawal without notice.



Disclaimer

Our company offers the details of this vessel in good faith but cannot guarantee or warrant the accuracy of this information nor warrant the condition of the vessel. A buyer should instruct his agents and/or surveyors to investigate such details buyer desires validated. This vessel is offered subject to prior sale, price change or withdrawal without notice.